

# Lower East Side Waterfront Alliance

## Paths to Pier 42

*Activating the waterfront through temporary public art and events*

*Paths to Pier 42* is a proposal for a series of temporary art/educational/design installations and public events along the East River Waterfront that will take place in the summer of 2013. The newly-formed Lower East Side Waterfront Alliance is organizing this participatory process to increase access and create temporary public uses while areas of the waterfront from the Brooklyn Bridge to East River Park are awaiting capital improvements. We propose a competitive process that will select five artist/designer teams to collaborate with Alliance member organizations. The selected art/design team will work with the partner organization to develop a small scale built intervention that can function both as a space that can accommodate or enhance programming the partner organization wishes to conduct at the waterfront.

**Ultimately we hope to model activities that can and will take place on the waterfront once it is fully redeveloped while providing community access and programming in the interim.**

Alliance member organizations that have been identified to develop project programming include: Two Bridges Neighborhood Council, CAAAV, GOLES, Hester Street Collaborative, and the Lower East Side Ecology Center. There will be an RFP process for artists, scientists, planners, and other potential contributors. Artist/design teams will be given a materials budget and stipend, and partnering organizations will receive a program allocation. An independent jury including design and planning professionals will be empaneled to select the winning ideas. The Lower East Side Waterfront Alliance seeks to partner with Community Board 3, NYC Department of Parks & Recreation and other key government agencies and decision makers to realize this project.

### Project Content Goals

- Create safe and inviting pedestrian access from the surrounding residential neighborhoods
- Celebrate local culture and history
- Provide environmental education
- Promote healthy living
- Inform residents about local development issues.
- Engage communities that live and work along the waterfront in the development and construction (if possible) of the art/design installations

### Project Siting

- Projects may be sited anywhere between the Brooklyn Bridge and East River Park, and on streets that connect to the Waterfront, with the goal of increasing access to the waterfront via these upland connections or the East River Greenway.
- If possible projects may be sited on areas of Pier 42 or public spaces of Pier 36 that are directly accessible or aren't currently under construction or demolition.





*Precedents of temporary art/design installations in NYC*



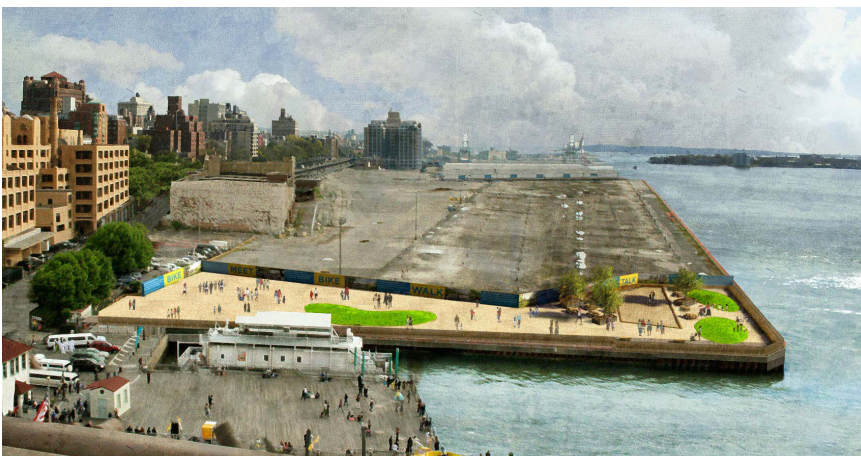
*P.S. 1 installation - Public Farm 1 by Work AC - 2009*



*Spacebuster temporary event space beneath BOE by Raumlabor with Storefront for Art and Architecture - 2009*



*Mall-terations art installation on Allen Street pedestrian malls by Hester Street Collaborative - 2010*



*Temporary "Pop-Up" park at Pier 1 during Brooklyn Bridge Park construction by DLand Studio - 2008*



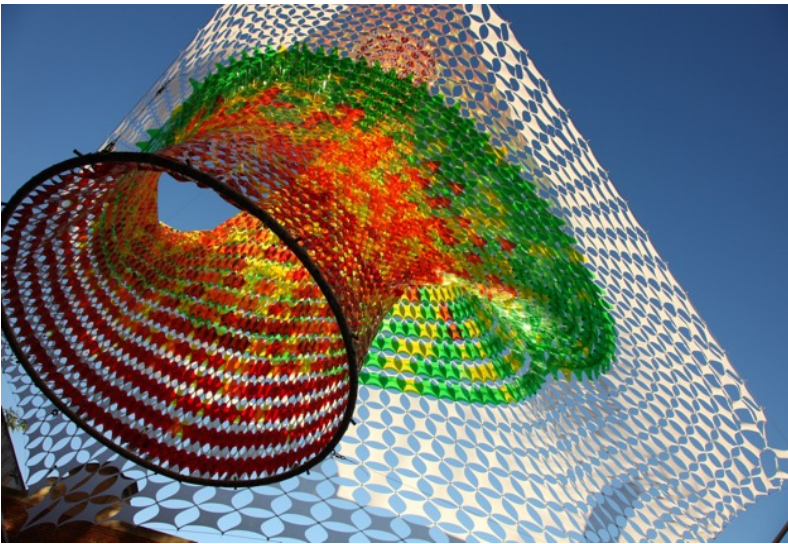




*LMCC's Lent Space at a stalled development site in Tribeca  
by Interboro - 2009*



*Dumpster Pools at Summer Streets along Park Ave.  
by Macro-Sea with the NYC DOT*



*San Genaro Gateway North Installation  
by SoftLAB with Two Bridges Neighborhood Council -2011*



*Solar 1 temporary pavillion in Stuyvesant Cove Park by Situ Studio - 2008*